

A large, polished silver trophy cup stands against a clear blue sky. The cup is highly reflective, showing a distorted image of a golf course with a green and a golfer. A small white rectangular label is affixed to the upper left side of the cup, bearing the text "charles SCHWAB". The trophy sits on a wide, cylindrical base. The base has a dark band with the words "FOUR CHAMPIONS" in silver. Below this, the words "CHARLES SCHWAB CUP" are engraved in large, bold letters. Further down, smaller names are visible: "ROBERTS", "KENNY PERRY", "KEVIN SUTHERLAND", and "STEVEN". The base of the trophy is surrounded by a vibrant bouquet of flowers, including red roses, orange lilies, purple hydrangeas, and yellow daisies.

charles  
SCHWAB

2025

CHARLES SCHWAB CUP CHAMPIONSHIP

VOLUNTEER

TRAINING





# TOURNAMENT SNAPSHOT

- DATE: NOVEMBER 13-16, 2025
- SITE: PHOENIX COUNTRY CLUB
- FORMAT: FOUR DAYS, 72 HOLES, STROKE PLAY
- FIELD: TOP 36 PGA TOUR CHAMPIONS PROFESSIONALS
- PURSE: \$3 MILLION
- TITLE SPONSOR: CHARLES SCHWAB
- '24 TOURNAMENT CHAMPION: BERNHARD LANGER
- '24 SEASON LONG CHAMPION: STEVEN ALKER



# SCHEDULE OF EVENTS

## MONDAY

### COURSE CLOSED TO PUBLIC

- Practice Round for Professionals
- Working Volunteer Committees Only
- 8 AM VOLUNTEER HQ OPENS

## TUESDAY

### COURSE CLOSED TO PUBLIC

- Practice Round for Professionals
- Working Volunteer Committees Only
- San Tan Ford Official Pro-Am Party
- 8 AM VOLUNTEER HQ OPENS

## WEDNESDAY

### SAN TAN FORD OFFICIAL PRO-AM

- No Hospitality Venues Open
- 5:30 AM VOLUNTEER HQ OPENS

## THURSDAY

### ROUND ONE, GATES OPEN 10 AM

- Tee Times Approx: 10:30 AM
- 8 AM VOLUNTEER HQ OPENS
- All Hospitality Open
- Women's Executive Day  
presented by Troon

## FRIDAY

### ROUND TWO, GATES OPEN 10 AM

- Tee Times Approx: 10:30 AM
- 8 AM VOLUNTEER HQ OPENS
- All Hospitality Open

## SATURDAY

### ROUND THREE, GATES OPEN 10 AM

- Tee Times Approx: 10:30 AM
- 8 AM VOLUNTEER HQ OPENS
- All Hospitality Open
- 5k Walk to End Colon Cancer

## SUNDAY

### FINAL ROUND, GATES OPEN 10 AM

- Tee Times Approx: 10:15 AM
- 8 AM VOLUNTEER HQ OPENS
- All Hospitality Open
- Military Appreciation Ceremony



# COURSE MAP



DOWNLOAD THE PGA TOUR APP TO ENHANCE YOUR TOURNAMENT EXPERIENCE, WITH CONVENIENT ACCESS TO PAIRINGS, COURSE INFORMATION, TEE-TIMES, LIVE-SCORING, PLAYER SCORECARDS AND MORE.



CHAMPIONSHIP RESOURCE



## INCLEMENT WEATHER POLICY

OBSERVE THE ELECTRONIC LEADERBOARDS THROUGHOUT THE GOLF COURSE FOR WEATHER WARNINGS DISPLAYED USING A COLOR-CODED ALERT SCALE. SPECTATORS SHOULD TAKE PRECAUTIONS UPON OBSERVING ANY WEATHER WARNINGS AND BE READY TO SEEK SAFE SHELTER IF APPROPRIATE, WHICH MAY INCLUDE EXITING THE PREMISES.

## IN THE EVENT OF DANGEROUS WEATHER

AVOID THE FOLLOWING: HILLTOPS/HIGH PLACES; GOLF CARTS; TEMPORARY STRUCTURES; TREES; WIRE FENCING.



# COURSE MAP KEY



*charles*  
**SCHWAB**  
CHAMPIONSHIP



CHAMPIONS

## OPEN TO PUBLIC



1st TEE TERRACE



CONCESSIONS



RESTROOMS



ADA SHUTTLE PICKUP



FIRST AID  
PROVIDED BY  
REDIRECT HEALTH



TICKET SERVICES



ATM



MAIN ENTRANCE



ROXX HOUSE



COCKTAILS



PUBLIC BLEACHERS  
PRESENTED BY  
SAN TAN FORD

## HOSPITALITY



CHARLESSCHWAB  
HOSPITALITY



PHOENIX COUNTRY  
CLUB MEMBER



SMEAD CORRAL



1899 CLUB



SAN TAN FORD  
THE BUNKER



THE OASIS



PATRIOTS' OUTPOST  
PRESENTED BY  
PRECISION AIR & PLUMBING



SIGNATURE SUITES



THE PAVILION



VOLUNTEER HQ

## PHOENIX COUNTRY CLUB | PHOENIX, ARIZONA

HOLE	1	2	3	4	5	6	7	8	9	OUT
PAR	5	3	4	4	4	4	5	3	4	36
YARDS	511	175	457	405	306	460	571	203	401	3489

HOLE	10	11	12	13	14	15	16	17	18 IN
PAR	4	4	4	3	4	3	4	4	535
YARDS	460	444	339	194	438	185	354	430	527 3371

TOTAL PAR 71 YARDS 6860



/schwabcupfinale



@schwabcupfinale



@schwabcupfinale



# VOLUNTEER UNIFORMS

ALL VOLUNTEERS ARE REQUIRED TO WEAR THE  
OFFICIAL 2025 CHARLES SCHWAB CUP  
CHAMPIONSHIP UNIFORM AND CREDENTIALS.



## 2025 Volunteer Uniform Package

### Additional Items Available for Purchase

**\*Volunteer Exclusive Offers\***



Additional Men Jacket  
\$ 80 .00



Additional Women Jacket  
\$ 80 .00



Bucket Floppy Hat  
\$ 30 .00



Straw Hat  
\$ 30 .00



Volunteer Baseball Hat



Volunteer Clear Tote



Volunteer WOMEN Jacket



Volunteer WOMEN Visor



Volunteer Unisex Visor



Volunteer WOMEN Jacket - 2XL



Volunteer WOMEN Polo



S - 3XL  
Kelly Green



4XL  
Navy

Volunteer MEN Polo



Volunteer MEN Jacket



Volunteer MEN Jacket - 4XL

**BOTTOMS: MUST BE KHAKI PANTS, SHORTS, SKORTS**  
**\*COME PREPARED FOR THE WEATHER\***

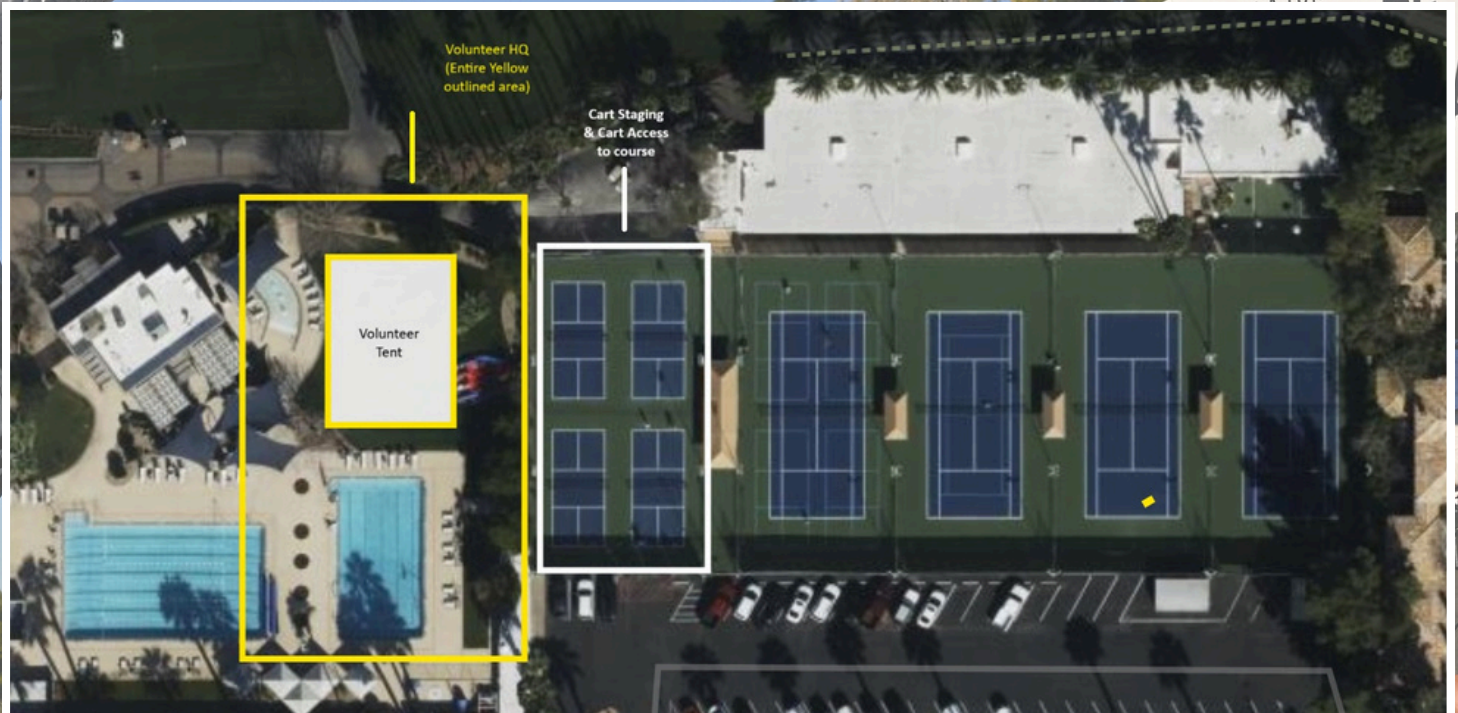


# VOLUNTEER HEADQUARTERS

Make the Volunteer Village your home for tournament week!

Be sure to check in at your committee's table inside the Volunteer HQ tent before your shift begins.

**LOCATION:**  
Phoenix Country Club Pool Entrance Near 1st Tee





# VOLUNTEER F&B

- **MONDAY, NOV 10th**
  - Breakfast: 7 am - 10:30 AM (Volunteer HQ)
  - Lunch: Donated
- **TUESDAY, NOV 11th**
  - Breakfast: 7 am - 10:30 AM (Volunteer HQ)
  - Lunch: Donated
- **WEDNESDAY, NOV 12th**
  - Breakfast: 5:30 am - 10:30 AM (Volunteer HQ)
  - Lunch: Donated by Carl's Jr.
- **THURSDAY, NOV 13th**
  - Breakfast: 7 am - 10:30 AM (Volunteer HQ)
  - Lunch: Vouchers provided for Concession Stands
- **FRIDAY, NOV 14th**
  - Breakfast: 7 am - 10:30 AM (Volunteer HQ)
  - Lunch: Vouchers provided for Concession Stands
- **SATURDAY, NOV 15th**
  - Breakfast: 7 am - 10:30 AM (Volunteer HQ)
  - Lunch: Vouchers provided for Concession Stands
- **SUNDAY, NOV 16th**
  - Breakfast: 7 am - 10:30 AM (Volunteer HQ)
  - Lunch: Vouchers provided for Concession Stands





# UNIFORM DISTRIBUTION

## DATES:

- OCTOBER 31st  
12:00 PM – 5:00 PM
- NOVEMBER 1st  
9:00 AM – 2:00 PM
- NOVEMBER 8th  
9:00 AM – 1:00 PM

## LOCATION:

PHOENIX CC  
EAST TENNIS  
COURTS

2901 North 7th Ave  
Phoenix, AZ 85014



If you can't pick-up your uniform at one of these times and dates, please reach out to Kristi Lee Fowlks or Tom Ruscitti.

[kristileefowlks@pgatourhq.com](mailto:kristileefowlks@pgatourhq.com)

[thomasruscitti@pgatourhq.com](mailto:thomasruscitti@pgatourhq.com)



# VOLUNTEER COMMUNICATION

- Committee Chairman will be volunteer's main contact.
- Volunteers should reach out immediately to your Committee Chairman with any schedule conflicts.
- Volunteer Newsletters/Emails will be distributed in advance of and during tournament week.
- Volunteers should check their email regularly through and leading up to the tournament.
- Be flexible and communicate with your committee chairman.





An aerial photograph of a golf course with several large white tents set up on the grass. In the background, a city skyline is visible with a prominent tall building, and further back, a range of mountains under a clear sky. The text 'CREDENTIALS & ACCESS' is overlaid in large, bold, white letters with a blue outline.

# CREDENTIALS & ACCESS

- **Volunteers must have their 2025 credentials to enter the grounds during tournament week. (No exceptions!)**
- **Credentials must be displayed on outerwear at all times.**
- **Access to restricted areas without proper credentials is strictly prohibited.**
- **Volunteer badges will allow admittance to watch the tournament Thursday, November 13 – Sunday, November 16.**



# **VOLUNTEER PARKING LOT B**



## **VETERANS MEMORIAL COLISEUM**

**1951 Encanto Blvd  
Phoenix, AZ 85009**

Follow PGA TOUR signage for “Lot B Parking”  
Volunteers should allocate time for travel and thermal screening prior  
to their shift.



# LOT B

# SHUTTLE HOURS

- MONDAY, NOV 10th  
CLOSED TO VOLUNTEERS
- TUESDAY, NOV 11th  
CLOSED TO VOLUNTEERS
- WEDNESDAY, NOV 12th  
5:30 AM - 6:00 PM
- THURSDAY, NOV 13th  
7:00 AM - 6:00 PM
- FRIDAY, NOV 14th  
7:00 AM - 6:00 PM
- SATURDAY, NOV 15th  
7:00 AM - 6:00 PM
- SUNDAY, NOV 16th  
7:00 AM - 6:00 PM

End of Day times are approximated.  
Shuttles stop 1 hour after play



# **SAFETY GUIDELINES**

- 1. Wear comfortable, closed-toes, and slip – resistant shoes.**
- 2. Wear sunscreen, hat and other protective clothing.**
- 3. Maintain adequate hydration.**
- 4. Follow all PGA TOUR golf cart, utility vehicle, and vehicle safety guidelines.**
- 5. Practice proper ergonomics.**
- 6. Report unsafe conditions to tournament staff and committee chair.**
- 7. Maintain a clean and orderly environment free of trip hazards.**
- 8. Be vigilant to surroundings to prevent being struck by a golf ball or equipment.**
- 9. Use proper tools and protective equipment to perform tasks.**
- 10. Take breaks and rest when needed.**



## PERMITTED ITEMS



Personal bags 6" x 6" or smaller



Clear plastic, vinyl or other carry items not exceeding 12" x 6" x 12"



A one-gallon clear resealable plastic bag



At the tournament's discretion, food may enter the tournament in a clear, resealable plastic bag, not to exceed the size of a one (1) gallon bag



Reusable plastic or metal cups/bottles that are empty upon entry and exit, and cannot hold more than 32-ounces



Mobile phones, tablets, and PDA's - **MUST** be on Silent mode and adhere to TOUR's Mobile Device Policy



Point and shoot, film or DSLR cameras with lens smaller than 6"; no case  
(During Practice Rounds Only)



Umbrellas without sleeve



Portable radios with headsets



Medically necessary materials, strollers, small diaper bags, plastic baby bottles, and other essential baby supplies (infant must be with carrier) - items subject to search



Collapsible chairs without chair bags



Binoculars without case



Seat cushions that do not require a carrying case or that do not have pockets or compartments



Segways®, motorized scooters or other personal transportation devices when used as a mobility aid by individuals with mobility impairment



# PROHIBITED ITEMS



**No bags larger than a small purse 6"x6" including carrying cases, backpacks, camera bags, or chair bags**  
(See the PGA TOUR Bag Policy for more information  
(<https://www.pgatour.com/company/tournaments-prohibited-items.html#bagpolicy>))



**No clear plastic, vinyl, or other carry items larger than 12"x6"x12"**  
(See the PGA TOUR Bag Policy for more information  
(<https://www.pgatour.com/company/tournaments-prohibited-items.html#bagpolicy>))



**No glass cups or bottles of any kind except for medical or infant needs**



**No memorabilia including pin flags, photos, trading cards, balls and other sports paraphernalia**



**No computers or laptops**



**No fireworks or laser pointers**



**No lounge or over-sized chairs with extended foot rests**



**No seat cushions in a carrying case or that have pockets or compartments**



**No pets, except for service animals**



**No knives, firearms or weapons of any nature**



**No video cameras (All Week)**



**No point and shoot, film or DSLR cameras (During Competition Rounds)**



**No selfie sticks or hand-held camera stabilizers**



**No beverages (patrons may not bring in or exit with beverages) or coolers**



**No radios, TVs, or portable speakers**



**No posters, signs or banners**



**No motorcycles, mopeds, tricycles, bicycles (whether or not motor-driven), skateboards, hoverboards, or other similar devices will be permitted to be operated on or within tournament property.**  
Segways®, motorized scooters or other personal transportation devices are prohibited if not used as a mobility aid by individuals with mobility impairment



**No drones, Remote Controlled Model Aircrafts or other devices that can be operated in airspace will be permitted to be operated at PGA TOUR events during tournament week.**





# TOURNAMENT BAG POLICY

## APPROVED BAGS



Bags smaller than  
6"x6"x6"



Clear Bag smaller than  
12" x 6" x 12"



1-Gallon Plastic  
Freezer Bag



Medically Necessary and  
Diaper Bags\*

*\*Infant and Medical supplies will be permitted after proper inspection.*

## NON-APPROVED BAGS



Backpack



Camera Case



Mesh Bag



Purse



Seat Cushion



Clear Backpack



Tinted Plastic Bag



Over-sized  
Tote Bag



Binoculars Case



Printed Pattern  
Plastic Bag



Folding Chair Bag  
(Folding Chair is Allowed)

FOR MORE INFORMATION GO TO [PGATOUR.COM/ProhibitedItems](http://PGATOUR.COM/ProhibitedItems)



# VOLUNTEER ETIQUETTE

All volunteers are an extension of the Charles Schwab Cup Championship team.

Volunteers are asked to adhere to these etiquette guidelines:

- Please remain quiet and still during each shot until all players in the group have played out.
- Please follow the tournament's health & safety guidelines.
- Have fun! Ask questions and utilize your committee chairman.





# WEATHER SCALE

POLICY	ACTION
<b>ALL CLEAR</b>  INCLEMENT WEATHER NOT EXPECTED	<ul style="list-style-type: none"> <li>No action required</li> </ul>
<b>BE AWARE</b>  INCLEMENT WEATHER POSSIBLE	<ul style="list-style-type: none"> <li>Familiarize yourself with the following:               <ul style="list-style-type: none"> <li>Evac procedure</li> <li>Communication plan</li> <li>Safe Shelter Locations</li> </ul> </li> <li>All tents, services and admissions open</li> </ul>
<b>BE PREPARED</b>  INCLEMENT WEATHER APPROACHING	<ul style="list-style-type: none"> <li>Get yourself prepared for inclement weather</li> <li>Communicate inclement weather plans to key staff, volunteers, club staff, hospitality clients, shuttles and vendors</li> <li>All tents, services and admissions remain open</li> </ul>
<b>TAKE ACTION</b>  INCLEMENT WEATHER	Red level 1: <i>Non-threatening weather</i> <ul style="list-style-type: none"> <li>Play suspended or delayed</li> <li>All tents, services and admissions remain open</li> </ul>
	Red level 2: <i>Threatening weather</i> <ul style="list-style-type: none"> <li>Play suspended or delayed</li> <li>Follow appropriate evacuation plans for players, fans and sponsors</li> <li>Seek safe shelter or stay at own risk</li> <li>All temporary structure services closed</li> <li>For Air Quality suspensions, follow appropriate procedures</li> </ul>
<b>COURSE CLOSED</b>	<ul style="list-style-type: none"> <li>Play suspended for the day</li> <li>All services and structures closed</li> <li>Exit premises</li> </ul>





# **COURSE WIDE EVACUATION**

- **Would only occur in the event of severe weather - thunder, lightning, tornado warning, etc.**
- **EVACUATION NOTIFICATIONS:**  
**Horn sounding play has ended, and evacuation has started.**
- **Scoreboards throughout the course will display evacuation messaging.**
- **Radio announcement to all Volunteer Leadership, Tournament Staff, Vendors, etc.**
- **Volunteers must clear the course and return to their vehicles as soon as possible.**



# RESOURCES

## VOLUNTEER HANDBOOK:

<https://www.flipsnack.com/6BBFFEEEFB5/volunteer-handbook-final-10-28.html>

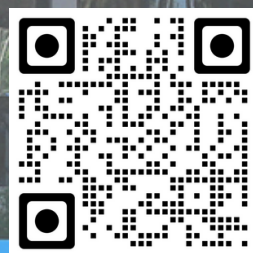
## VOLUNTEER WEBSITE:

<https://www.flipsnack.com/6BBFFEEEFB5/volunteer-handbook-final-10-28.html>

## CORPORATE HOSPITALITY GUIDE

<https://www.flipsnack.com/6BBFFEEEFB5/csc-ccorporate-manual-2024/full-view.html>

## CHAMPIONSHIP RESOURCE:







**THANK YOU VOLUNTEERS!**

